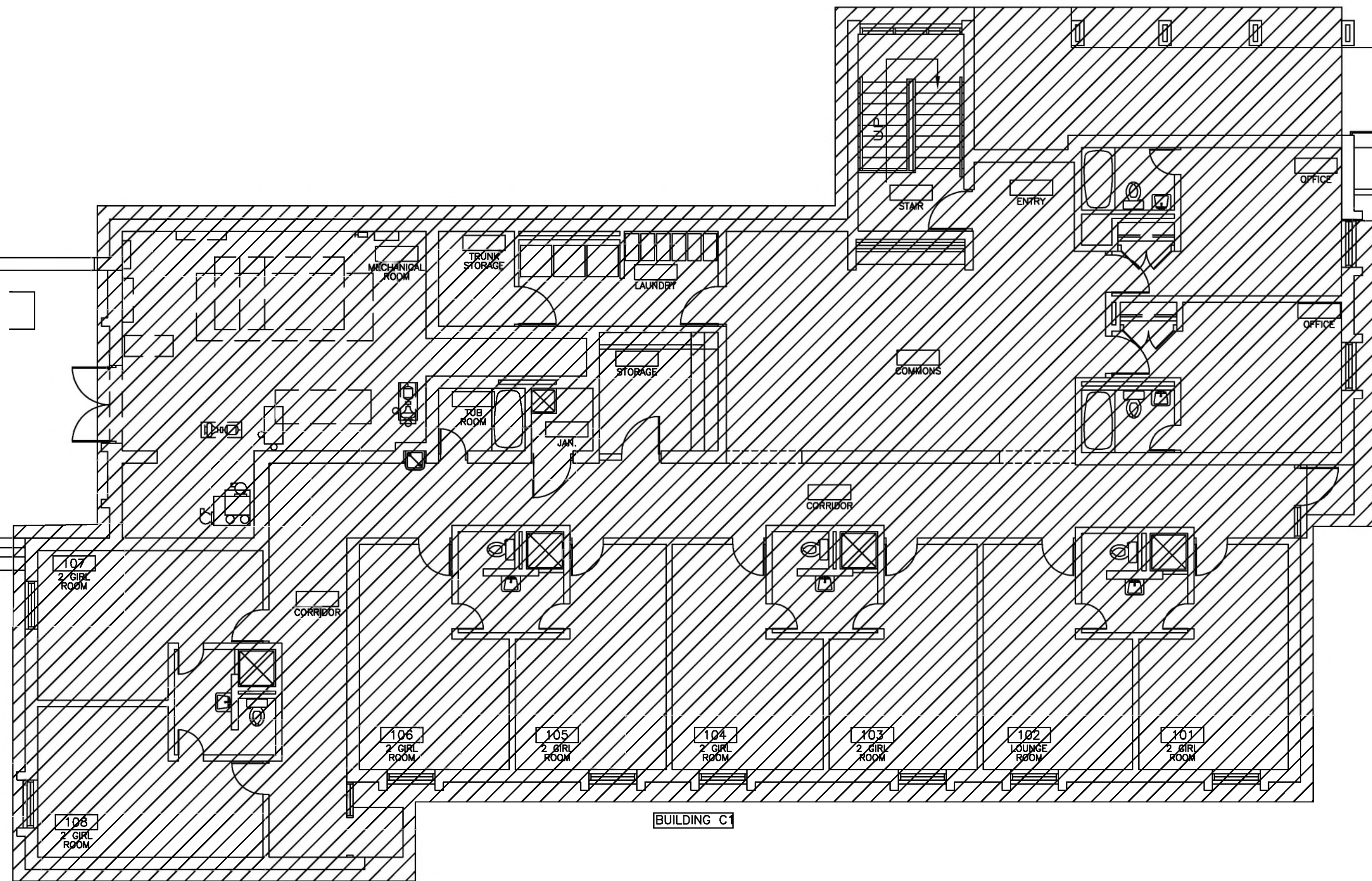
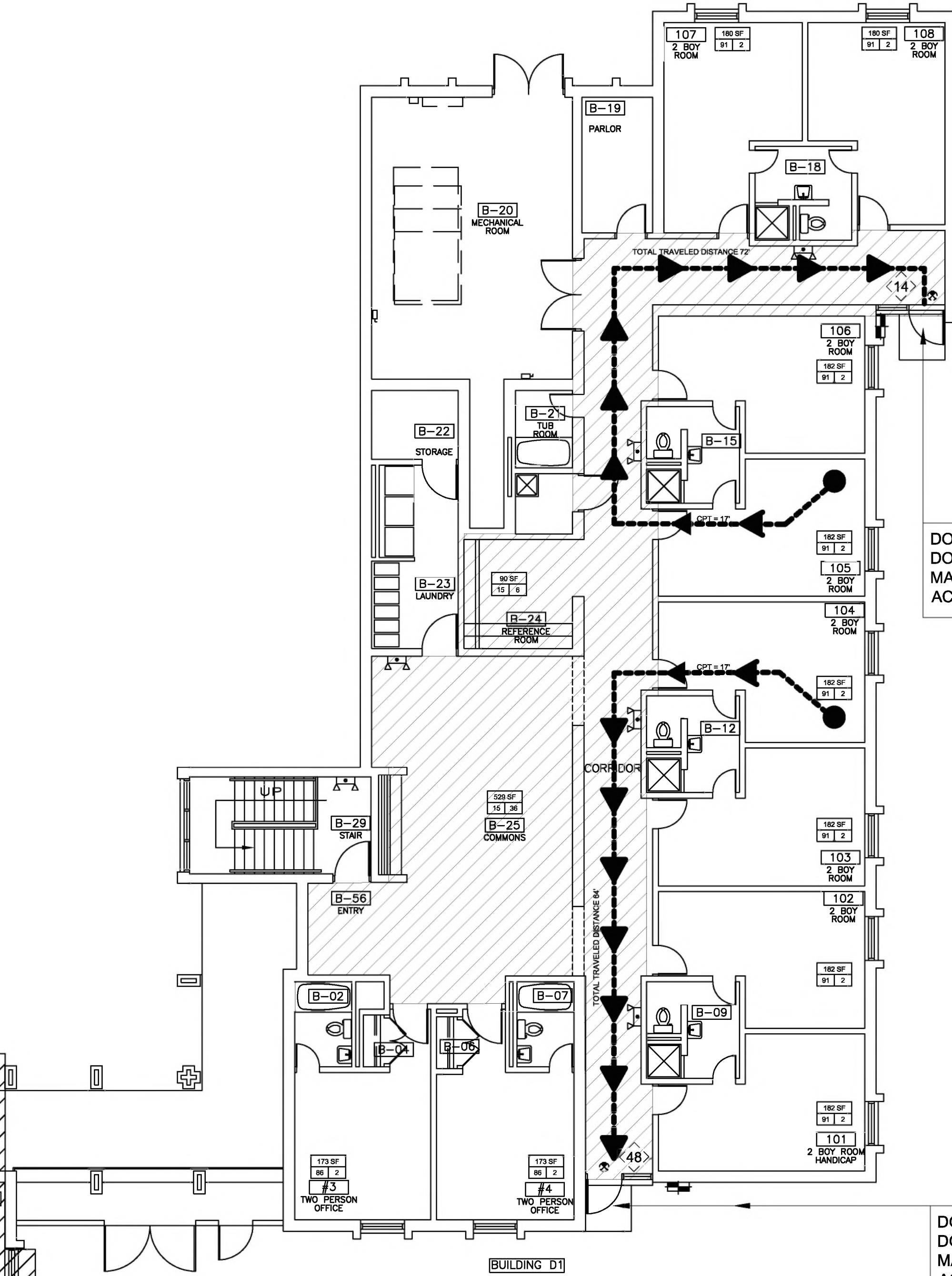


LIFE SAFETY LEGEND	
	EXIT SIGNS
	TOTAL DISTANCE TRAVELED
	COMMON PATH OF TRAVEL
	COMMON PATH OF TRAVEL DISTANCE. MAXIMUM ALLOWABLE TRAVEL DISTANCE 300'
	NUMBER OF OCCUPANTS
	NUMBER OF OCCUPANTS AT EXIT
	EXISTING 1 HR RATED FIRE BARRIER WALLS AS INDICATED IN AS-BUILT DRAWINGS PROVIDED
	1 HR RATED FIRE BARRIER WALLS/CEILING SYSTEM
	EMERGENCY EXIT LIGHT
	WALL MOUNTED EMERGENCY LIGHT
<div><div>120 SF</div><div>60</div><div>2</div></div> ----- ROOM AREA ----- OCCUPANT LOAD ----- AREA PER OCCUPANT	



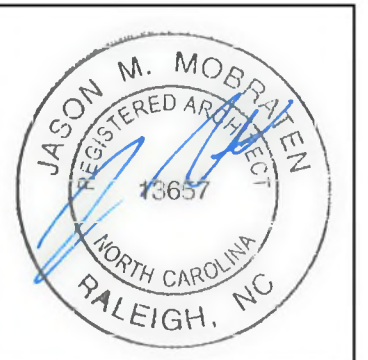
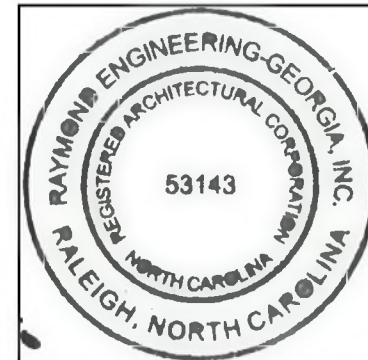
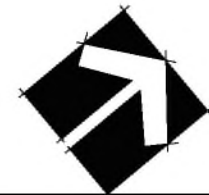
1
G-402 BUILDING C1 - NOT IN SCOPE
SCALE: 1/8" = 1'-0"



1
G-402 BUILDING D1 - LIFE SAFETY PLAN
SCALE: 1/8" = 1'-0"

DOOR WIDTH PROVIDED: 34"
DOOR WIDTH REQUIRED: 32"
MAXIMUM OCCUPANT LOAD: 170 PERSONS
ACTUAL OCCUPANT LOAD: 14

DOOR WIDTH PROVIDED: 34"
DOOR WIDTH REQUIRED: 32"
MAXIMUM OCCUPANT LOAD: 170 PERSONS
ACTUAL OCCUPANT LOAD: 48



REVISIONS	

ATLANTEC
ENGINEERS, PA
3221 BLUE RIDGE ROAD, SUITE 113
RALEIGH, NC 27612
(919) 371-1111
1505 ST. JAMES PLACE
RALEIGH, NC 27604
(919) 527-3336
RAYMOND
316 WEST MILLBROOK ROAD, SUITE 201
RALEIGH, NORTH CAROLINA
OFFICE: (919) 727-8886
FAX: (919) 727-8887
LICENSE #63143 CON-04282

PREPARED FOR:
NC DEPARTMENT
OF INSTRUCTION
SCO #
24-27792-01A

GOVERNOR MOREHEAD SCHOOL
SPRINKLER, ADA TOILET, LIGHTING
UPGRADES FOR DORMS A, B, & D
RALEIGH, NC

CONTENTS:
LIFE SAFETY
PLAN
FIRST FLOOR
BUILDING D

DATE:
05/27/2025
FOR
CONSTRUCTION
DESIGNER:
ENGINEER:

SHEET NO.
G-402
OF